

Dresses for Haiti

Follow the directions below to make a simple dress for a little girl in Haiti.

Materials required:

- 5/8 yd. – 1-1/8 yd. cotton fabric, depending on size
- 2-1/2 yd. 1/2" double fold bias tape
- 12" – 16" elastic, 1/4" wide, depending on size
- Coordinating all-purpose thread
- 1 1/2" x 3/4" piece of sew-in interfacing or 1 1/2" piece of seam binding for size tag

Making the Dress

1. Cut a fabric rectangle.

Size	Cut size	Finished Length	Size	Cut size	Finished Length
3 Sm.	22" x 42"	19"	8 Med.	33" x 42"	30"
4 Sm.	25" x 42"	22"	9 Med.	35" x 42"	32"
5 Sm.	27" x 42"	24"	10 Lg.	37" x 42"	34"
6 Med.	29" x 42"	26"	11 Lg.	39" x 42"	36"
7 Med.	31" x 42"	28"	12 Lg.	41" x 42"	38"

2. Fold fabric in half, meeting selvage edges. Stitch a 5/8" (wider if the selvage is wide) seam. Press the seam open. Center the seam on the stitched tube. (This will be the center back of the dress.)

3. Cut out armholes on upper side edges using the Armhole Template Pattern at right.

4. Fold under casings at the front and back top edges (the edges containing the armholes.) Fold edge under 1/4", then 1/2" to make each casing. Write dress size on size tag and tuck it under the edge of the casing at the center back. Edge-stitch casings catching the top edge of the size tag.

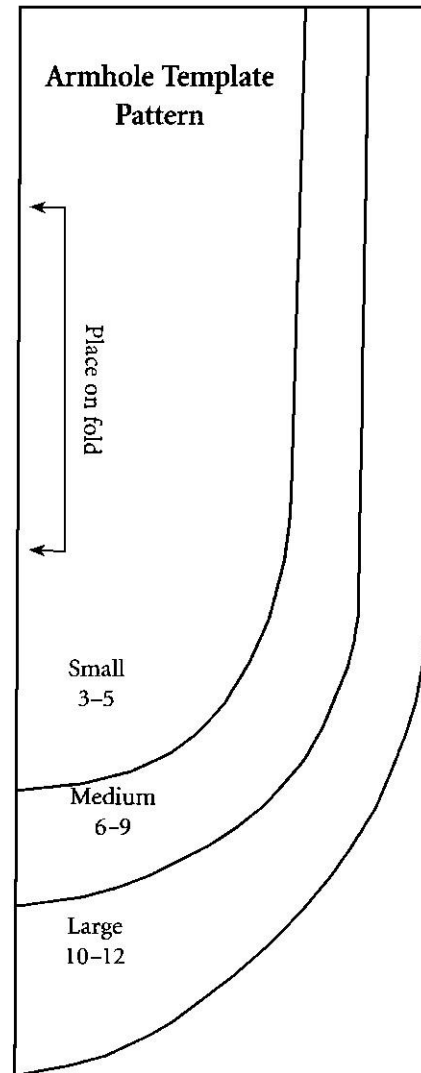
5. Cut elastic into two equal lengths (6" for size small, 7" for size medium, 8" for size large). Insert one length of elastic into each casing. Thread elastic through the casing; stitch elastic ends to the outer edges of the casing to prevent them from pulling out. This gathers the front and back of the dress.

6. Cut two 38" lengths of double fold bias tape. Open tape and turn under 1/4" on each end to finish the ends of the tape. Refold tape and encase armhole, allowing equal tape extensions at each end of the armhole so the dress can be tied at the shoulders. Edge-stitch tape.

7. Hem the lower edge by turning under 1/4", then 2". Edge-stitch.

Optional embellishment ideas:

- Add one or two pockets.
- Add a band of contrasting or coordinating fabric.
- Add lace, ribbon or other trims.
- Add an appliqué.



Return completed dresses to **Littleton Church of Christ, 6495 S. Colorado Blvd., Centennial, CO 80121**. There is a drop-off bin in the church lobby for completed dresses. If you have questions, please contact Barbara Dean at BarbaraBD@msn.com.